

# Leakage Current

**Model LCB**



FAST



SAFE



RELIABLE



\*Image for reference only



## LEAKAGE CURRENT

Designed to provide a fast, safe and reliable method of measuring unweighted touch current, touch current weighted for perception or reaction and touch current weighted for let-go. Measures DC and AC currents: calibrated frequency response 20Hz to 1MHz (Configurations 1, 2, 3, 4 and 6). Designed and built in accordance with IEC 60990-1 and IEC 60990-2, as well as in accordance with the applicable transfer impedance requirements in IEC 60990.

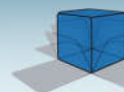


## Features

- Provides networks for:
  - IEC 60990:2016
  - IEC 61010-1:2016
  - IEC 60950-1:2013
  - IEC 60335-1: 2016
  - IEC 60601-1:2012
  - Various UL standards
  - Others; contact factory
- Portable, lightweight
- Measures 4.5 x 1.2 x 2.4 in.
- No batteries or power required
- Custom test leads available
- Provided with NIST calibration; A2LA calibration available; 20 Hz-1Mhz
- One year warranty

[www.compwest.com](http://www.compwest.com)

(800) 748-6224



**COMPLIANCE WEST USA**  
The blue box that tests. And tests.

Ver3.2 190405

# Leakage Current



FAST



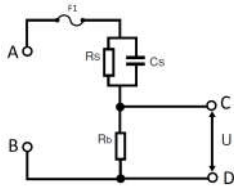
SAFE



RELIABLE

## Available Configurations:

**Config 1,6**

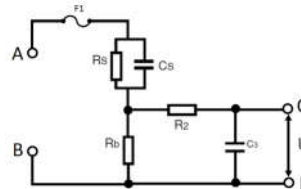


**Compliance to:**

Config 1:  
IEC 60990:2016 Fig. 3  
(unweighted touch current)  
IEC 61010-1:2016 Fig A.3

Config 6:  
IEC 61010-1:2016 Fig A.4

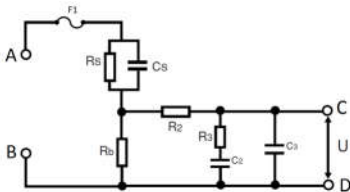
**Config 2**



**Compliance to:**

IEC 60990:2016 Fig. 4  
(weighted for perception)  
IEC 60950-1:2013 Fig. D.1  
IEC 61010-1:2016 Fig. A.1  
IEC 60335-1: 2016 Cl. 13.2

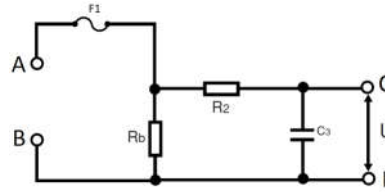
**Config 3**



**Compliance to:**

IEC 60990:2016 Fig. 5  
(weighted for let-go)

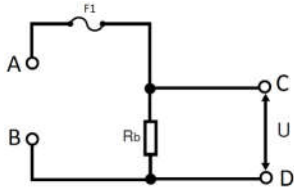
**Config 4**



**Compliance to:**

IEC 60601-1:2012 Fig. 12

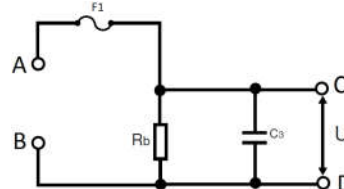
**Config 5**



**Compliance to:**

IEC 61010-1:2016 Fig. A.2

**Config UL**



**Compliance to:**

Various UL standards:  
1500 Ohm resistor in  
parallel with 0.15uF  
capacitor

Other configurations available. Contact factory.

## Specifications

Input Voltage Rating:	0-265Vac, 0-300Vdc
Input Current Rating:	100 mAac, 100mAdc (fuse protected)
Frequency Response:	20Hz – 1MHz

## Environmental

Operation Temperature:	15 - 40 °C
Relative Humidity Range:	0 - 90 % Non-Condensing

## General

Dimensions:	4.5 in. Wide x 1.2 in. High x 2.4 in. Deep
Weight:	4.5 oz (125 gr)
Product Package:	LCB Leakage Current Product Manual Pluggable terminal block with input and output test leads NIST Traceable Calibration Certificate to ANSI Z540, 20Hz to 1Mhz

650 Gateway Center Way, Suite D. San Diego, CA 92102 USA  
Toll Free: (800) 748-6224 Phone: (619) 878-9696

